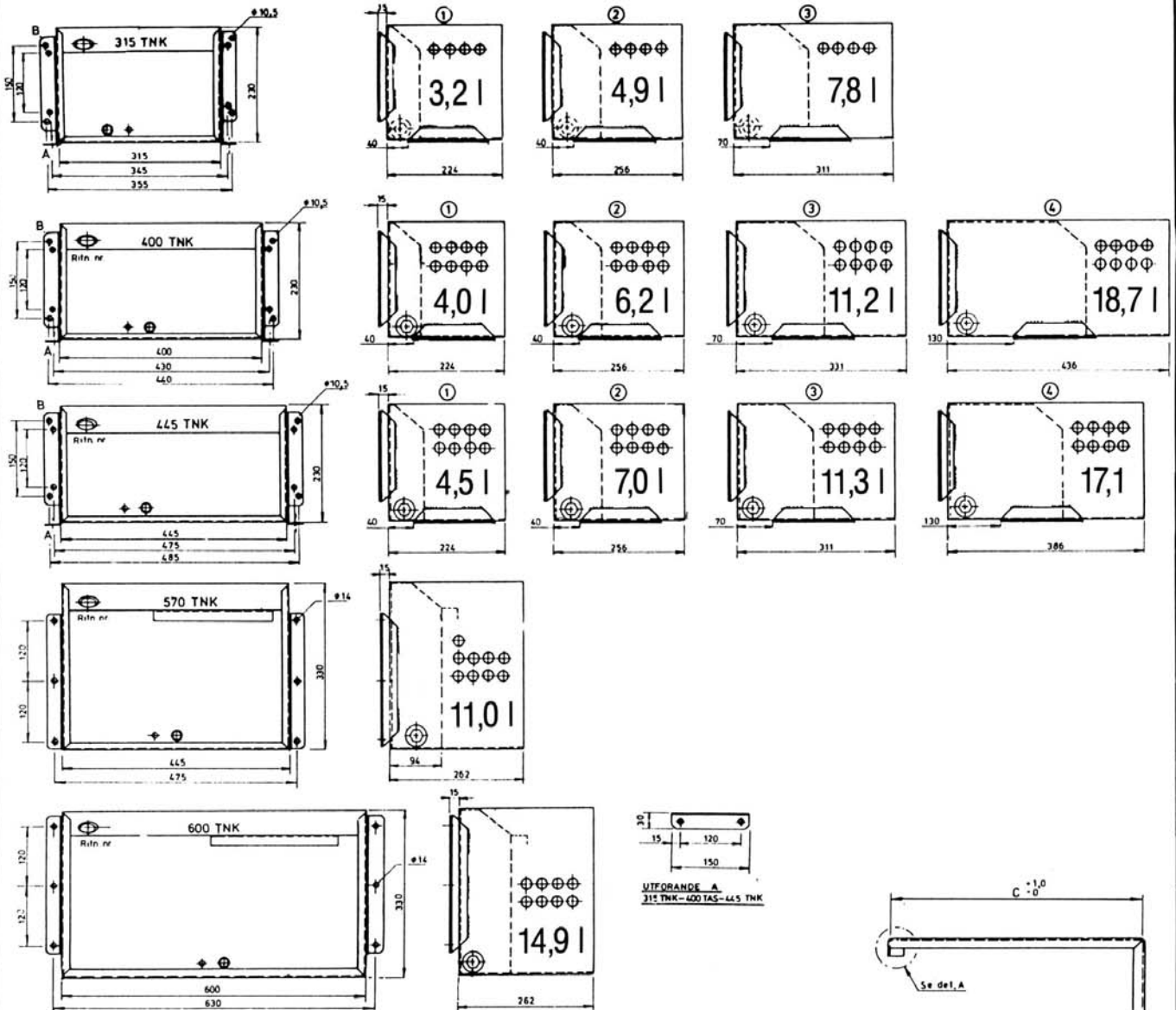


Hesselman

Hydraultank / Reservoir

Note: Reservoir capacity is usable volume.
A is horizontal mounting bracket, B is vertical mounting bracket.



LOCK	TANK	A	B	C	D	E
37001	315 TNK 1	317	230	227	37	240
37002	315 - 2	317	230	259	37	240
37003	315 - 3	317	230	314	37	240
37004	400 - 1	402	230	227	80	240
37005	400 - 2	402	230	259	80	240
37006	400 - 3	402	230	334	80	240
37007	400 - 4	402	230	439	80	240
37008	445 - 1	447	230	227	100	245
37009	445 - 2	447	230	259	100	245
37010	445 - 3	447	230	314	100	245
37011	445 - 4	447	230	389	100	245
37012	570- TNK	447	330	259	100	245
37013	600- TNK	602	330	259	100	400

